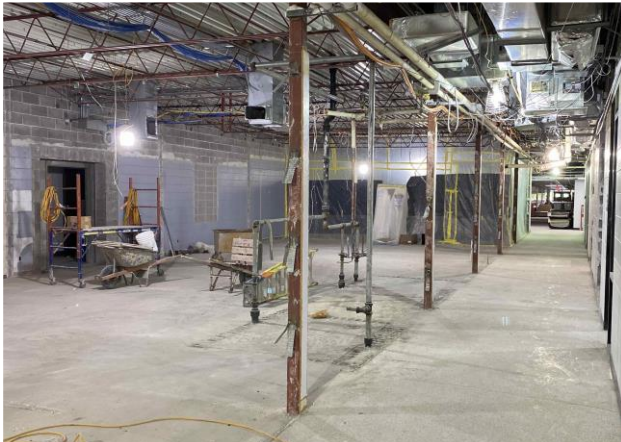


Construction Weekly Update

Week of May 17th, 2020

School District of Manawa



Middle School Collaboration



High School Collaboration



Fitness Center Entrance



Fitness Center Entrance Stairs and Lobby

Update

The exterior of the building continues to get cleaned up with metal panels being installed on the admin addition, and site concrete going in at the fitness center. Inside the building we are still in the process of demolition, but we wrapped up abatement this week which is a large milestone behind us. Underground and overhead mechanical, electrical and plumbing rough ins continue to be installed in the tech ed and maintenance area. Masonry patching and infill is occurring throughout the building as new doorways are being created, and old removed.

About Hoffman

Hoffman Planning, Design & Construction, Inc. is an integrated Total Project Management firm based in Appleton, Wisconsin. We partner with our clients to create innovative designs and build high quality, functional, attractive, energy efficient facilities at costs at or below projects delivered using traditional design and construction methods. Currently in our fifth generation of leadership, Hoffman continues to deliver the same expert service and superior value our clients have come to appreciate.