

# Construction Weekly Update

---

Week of May 10th, 2020

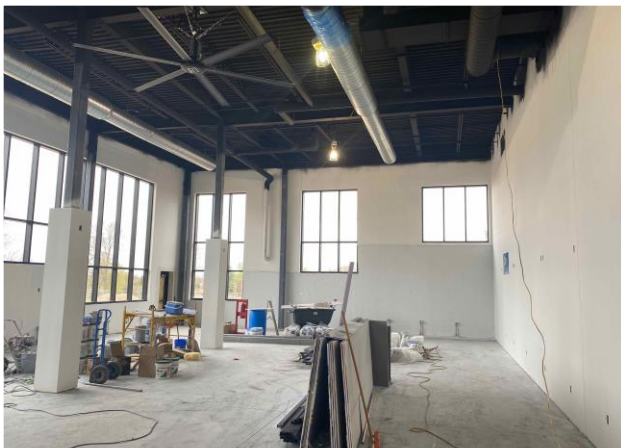
School District of Manawa



Main Entrance steel erected



Fitness Center ready for metal wall panels



Painting in the Fitness Center



Demolition occurring new Middle School Suite

## Update

We are in the midst of tackling numerous different phases of construction throughout the High School. The new main entrance is being erected and starting to take shape, while inside the high school we are knocking down walls, removing flooring, and prepping to lay out the new spaces. You will start seeing the metal panel facade being installed on the fitness center, and admin addition, along with site work continuing to be completed with concrete stairs sidewalks, and landscaping.

## About Hoffman

Hoffman Planning, Design & Construction, Inc. is an integrated Total Project Management firm based in Appleton, Wisconsin. We partner with our clients to create innovative designs and build high quality, functional, attractive, energy efficient facilities at costs at or below projects delivered using traditional design and construction methods. Currently in our fifth generation of leadership, Hoffman continues to deliver the same expert service and superior value our clients have come to appreciate.