

Construction Weekly Update

Week of February 17th, 2020

School District of Manawa



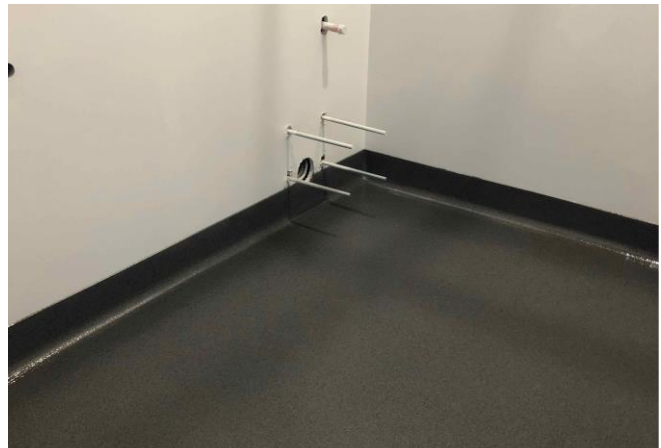
Exterior walls & sheathing at Fitness Addition



Painting at Administration Addition



Painting at Special Ed suite



Epoxy flooring in Admin Addition bathrooms

Update

At the Fitness Center, roof drain work and wall framing continued, and exterior sheathing was applied. Ceiling grid was installed at the Administration Addition and Special Ed area. Epoxy flooring was installed at restrooms in the Admin Addition. Painting continued into the Special Ed area. Dust collection ductwork was installed in the Tech Ed area. New fire alarm system was brought online.

About Hoffman

Hoffman Planning, Design & Construction, Inc. is an integrated Total Project Management firm based in Appleton, Wisconsin. We partner with our clients to create innovative designs and build high quality, functional, attractive, energy efficient facilities at costs at or below projects delivered using traditional design and construction methods. Currently in our fifth generation of leadership, Hoffman continues to deliver the same expert service and superior value our clients have come to appreciate.