

# Construction Weekly Update

---

Week of December 16, 2019

School District of Manawa



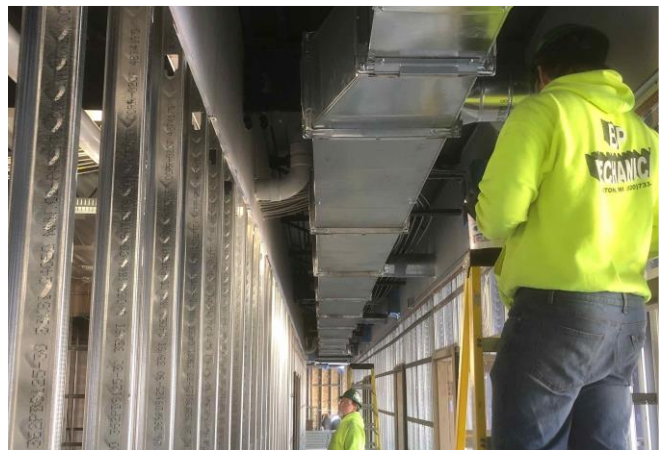
Interior footings formed at Fitness Addition



Interior footings poured at Fitness Addition



Framing continuing in Admin Addition



Ductwork proceeding in Admin Addition

## Update

The Administration addition has interior stud framing, ductwork, electrical, and roof drain rough-ins being performed. Ceiling grid is being installed in corridors after school hours. New hot water heaters are piped. Pad footings in the Fitness addition have been poured. Winter break flooring work began in the elementary school.

## About Hoffman

Hoffman Planning, Design & Construction, Inc. is an integrated Total Project Management firm based in Appleton, Wisconsin. We partner with our clients to create innovative designs and build high quality, functional, attractive, energy efficient facilities at costs at or below projects delivered using traditional design and construction methods. Currently in our fifth generation of leadership, Hoffman continues to deliver the same expert service and superior value our clients have come to appreciate.