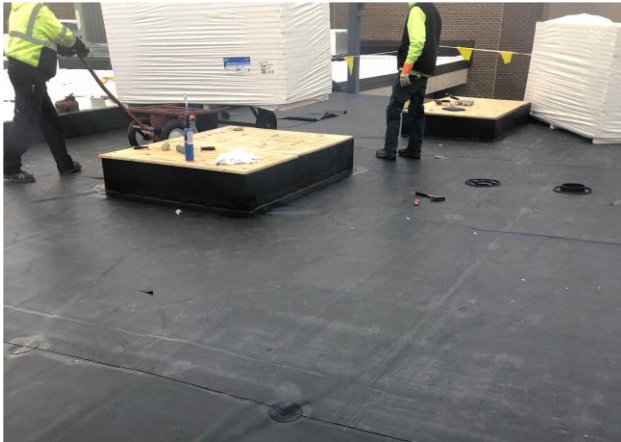


Construction Weekly Update

Week of December 9, 2019

School District of Manawa



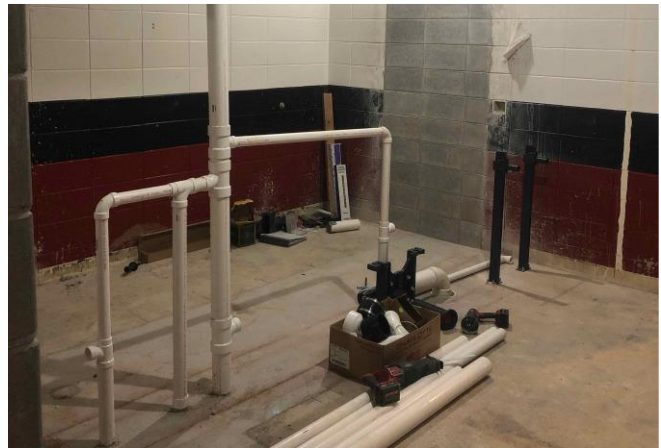
EPDM Roofing installed at Admin Addition



Interior framing continues at Admin Addition



Masonry work at lower level



Plumbing in Area E

Update

The Administration addition has been enclosed and the roofing has been installed. Interior stud framing at this area is progressing. Foundation work at the fitness center addition is completed, waterproofed, and ready for backfill. New changing rooms in the lower level are taking shape.

About Hoffman

Hoffman Planning, Design & Construction, Inc. is an integrated Total Project Management firm based in Appleton, Wisconsin. We partner with our clients to create innovative designs and build high quality, functional, attractive, energy efficient facilities at costs at or below projects delivered using traditional design and construction methods. Currently in our fifth generation of leadership, Hoffman continues to deliver the same expert service and superior value our clients have come to appreciate.