



# WOLFPACK EXPRESS

*Focusing On Activities In The School District of Manawa*

**April 19, 2018**



## Site Analysis and Facilities Study Action Plan (SAFS)

**BY DR. MELANIE J. OPPOR**  
DISTRICT ADMINISTRATOR



The Manawa Board of Education received the Site Analysis and Facilities Study (SAFS) Action Plan developed by Jody Andres from Hoffman Planning, Design, & Construction, Inc. (Appleton) and Cody Holzhauser of Scherrer Construction Company, Inc. (Wausau) in coordination with the Administrative Team on Tuesday, April 17 at 5:30 p.m. at Manawa Elementary School.

The SAFS Action Plan is a culmination of more than a year's worth of study and analysis of the district's facilities, sites, and academic learning environment needs. During the past year, engineers and architects examined the buildings and sites. Community listening sessions were conducted in various locations across the district. Focus groups were

held with all employee groups. A Community Stakeholders Group was formed to act as a sounding board to the district on the findings from Scherrer and Hoffman as well as to help the Board set priorities for next steps. All of this information has now been compiled into one document that represents a systemic

approach to addressing everything from immediate capital improvement/maintenance needs through setting up a Fund 46 – Capital Improvement Account to provide for the next generation of SDM students.

Bill Foster from School Perceptions also presented at the meeting. School Perceptions has expertise in doing educational surveys. Mr. Foster developed a survey to share information about the SAFS Action Plan and ask the district community to express your level

of interest in the suggested ideas. Your feedback will help the Board of Education prioritize the items of greatest importance to residents of the School District of Manawa. In addition, the survey will provide information about projected tax impacts for the range of options in the SAFS Action Plan. This community survey will be sent out to all district postal boxes. An electronic version of the survey will also be available.

All information from the site analysis and feasibility study is publicly available on the district website at: <http://www.manawaschools.org/community/safs.cfm>

Please refer to the "Resources" section of the web page. In addition, check out the video tour of the former elementary building to see its present condition. No decisions on moving forward with specific actions have been made to date. The district-wide community's voice needs to be heard!

**Social-Emotional Needs for Students**  
pg 2

**Book Author Miranda Paul Visited MES**  
pg 3

**Europe Comes Alive in Social Studies**  
pg 4

**Little Wolf Students on Tour** pg 6

**Raising Awareness Conversations**  
pg 7

## The "Why" Behind Collaborative Learning Spaces

**BY MICHELLE PUTIKA**  
ELEMENTARY PRINCIPAL

Manawa Elementary School has worked hard to provide 21st-century learning opportunities for our students. There

is much more movement in students' learning than there ever was before. For example, students begin with a 15-minute lesson sitting on the carpet, or bringing their chairs over in an open area, and the teacher explicitly teaches a specific skill or concept that students will apply during their independent work time. The students then move around the room to work independently. The teacher meets with individual students or small groups of students during this time to differentiate instruction to meet the students' learning needs. During this 30-45-minute work time, students may be working by



themselves, in a small group, or in pairs. The students are then called back to a whole group setting to share what they have been working on and state what they have learned.

Research supports this style of learning as well. "The ways in which teachers present information to students has expanded, and the need to accommodate all types of learners is crucial — meaning more than one kind of space is needed to compose the makeup of the traditional classroom. On top of that, the work world has changed, and the ability to collaborate has emerged as

**Learning Spaces**  
CONTINUES ON PAGE 2

**GO WOLVES! GO WOLVES! GO WOLVES! GO WOLVES!**



# Social-Emotional Needs for Middle School Students

BY DANIEL WOLFGAM  
JR/SR HIGH PRINCIPAL



As the Manawa community grapples with what is best for the middle-level learner, there will certainly be research that will support different models of success. There are, no doubt, many highly effective middle schools and many ineffective K-8 schools. The argument also stands to reason that some middle schools do not serve students well while other Jr. High concepts do an outstanding job preparing their learners for high school.

Students in the School District of Manawa have demonstrated a successful transfer to a Jr. High concept since 2010. So, what is the rationale for starting the transition at 6th grade? One of the most compelling reasons to consider banding the 6th grade with the 7th and 8th grade is the support for students in their social-emotional development. Students in middle school now deal with issues that parents did not have to contend with in their youth. Early adolescents can present

challenges, but a 6-8 grade configuration can provide an exclusive and perfect opportunity for bonding and forming a common community of learners.

Social learning is as important to success as academic learning. Knowing the physical, emotional, social, and intellectual needs of the students is as important as knowing the content that teachers deliver. By grouping the 6th-grade students with the 7th and 8th grade, students will have the opportunity to practice the essential personal/social skills that students need to be successful. The application of working through conflict resolution, social awareness, self-management, and impulse control, with like-minded peers who are dealing with the same set of challenges, will provide the platform for growth in a supportive community. The one piece of evidence that all researchers agree upon is that a child who adjusts socially-emotionally has a better chance of achieving academic success.



## Spanish Students Have Grown



BY AMY ANAYA

Students in Spanish this year at Little Wolf High School have grown by “saltos y brincos”. From the first- year freshmen to the fourth-year seniors, there was so much to learn and so little time. Yet the students entering their final quarter have shown fortitude and determination in their efforts to complete the year with a higher level of comprehension and speech than they had when we all began our journey together eight months ago.

For students in their first year of Spanish this has meant learning what “conjugating” is and then learning how to do it to as many verbs as possible. Second year students who knew this already went back in time-learning past tenses. This was not an easy task when there are so many rule breakers in the past. As for the third and fourth year students, after some time reviewing they entered the exciting world of application: listening to, reading, writing, and of course speaking Spanish to demonstrate everything that they had learned in their first two years.

If you are in middle school and didn’t get a chance for the Spanish Class experience this past year, all is not lost! You can take a fun introduction to the language and some cultural highlights this June during Summer School Sessions specifically tailored for those students who were not able to take the class.

There will also be a Spanish class for younger students entering first and second grade where they can learn or relearn familiar nursery rhymes and stories in Spanish with crafts and snacks that will reinforce every lesson.



### LEARNING SPACES

FROM PAGE 1

a critical skill in a 21st-century education (and in 21st-century careers). Consider, for instance, that the National Education Association (NEA) ranks collaboration among the top four skills students need to succeed in and beyond school. Here’s how the NAE explains it in Preparing 21st-Century Students for a Global Society: An Educator’s Guide to the “Four C’s”: Collaboration is essential in our classrooms because it is inherent in the nature of how

work is accomplished in our civic and workforce lives. Fifty years ago, much work was accomplished by individuals working alone, but not today. Much of all significant work is accomplished in teams, and in many cases, global teams.” (Retrieved from <http://marks-thomas.com/2015/05/achieving-successful-collaborative-learning-spaces-in-todays-schools/> , Apr. 3, 2018)

As MES has moved into implementing the workshop model where project-based learning can occur, the spaces of the classroom need to be designed to accommodate all the different learning scenarios. Students need to be able to reconfigure the furniture efficiently to support the various activities that take place in a classroom. To keep pace with the changing world of education and the rapidly changing learning styles of our students, collaborative learning spaces become a critical part of any successful classroom.



**We're Proud to Support Our Manawa Wolves**



**214 S. Bridge St.**  
**Manawa, WI**  
**920-596-3341**  
[remingtonsqualityfoods.com](http://remingtonsqualityfoods.com)

05186732

# Book Author Miranda Paul Visited MES During Read Across America Week

BY SHERI BARBER AND JEN ROSIN  
1ST GRADE TEACHERS

Award-winning children's book author, Miranda Paul, was a part of Manawa Elementary School's Read Across America Week celebration. After appearing at the elementary school, Paul had a Meet & Greet/Book Signing at the Sturm Memorial Library. Students at MES had the option to purchase one of Paul's books, *Water Is Water*, and have Paul individually sign their book.

*Water Is Water* is a book about the water cycle that was a catalyst for the first grade students to complete a cross-curricular mini-unit about the water cycle. Students learned motions to a song to help them remember that evaporation, condensation, and precipitation are key vocabulary words relating to the water cycle. Students observed two science experiments. An electric frying pan, ice, and an aluminum pie plate were used to show a visual representation of the water cycle. "Rain in a Jar" was an experiment where students observed rain falling from a cloud when it became too heavy. Number representation in a math activity resulted in a mystery cloud picture, helping kids to learn that condensation occurs in clouds. An arts and crafts activity involved making a bracelet with colored beads that represent the different components of the water cycle. Assembling a book, *Earth's Water*, taught students that it is important to take care of Earth's water because water is used by people, plants, and animals.

First graders learned from listening to Paul's *Water is Water* book that: water is... everywhere, water is...important, and water is everything.



## Math Cloud Activity

Haidynn Roemer, Lia Guerin, Mark Boissonnault, Emma Smith, Haleigh Durrand, Caiden Penkalski, Addison Niemuth, Theron Schuelke, Garron Pynenberg, Wesley Tohm, Easton Buschke, Rocky Beese, Anya Bartel



Rain in a Jar Experiment

Water Cycle Bracelets

# Frostbite Club — 2018 —



BY OLIVIA KOEHN, RN BSN  
DISTRICT NURSE

The Wellness Committee has concluded the Frostbite club for this school year. The event was reintroduced to the district this year in order to encourage physical activity and getting outside during the winter months, it also was an intention for students to learn the value in volunteering and spending time with family members and to get in the habit of making healthy eating choices. The event lasted for four weeks during which students were to log "miles" by performing activities that aligned with the goals of the program.

Following the four weeks there was a K-12 Olympic closing ceremony where prizes were disbursed to students. Prizes included t-shirts, water bottles, and Olympic medals. What better way to celebrate the end of the Frostbite club than to also celebrate the Olympics?

In concluding the event, it was exciting to learn that all together 100 students signed up and 64 students logged over 15,000 miles through volunteering, making healthy eating and activity choices, and spending valued time with family.

The Wellness Committee would like to congratulate the following three winners in Olympic terms: Bronze or third place goes to Nolan Heise, a fourth grader who logged 423 miles; Silver or second place goes to Cash Botting, a fourth grader who logged 435 miles; and our Gold or first place winner was Briley Rosin, a fifth grader who logged 487 miles. He is the winner of our grand prize, a Fitbit.

We would also like to take this opportunity to thank our community organizations who donated and helped make this program a success: Premier Community Bank, Sacred Heart Catholic Church, Manawa Athletic Booster Club, First State Bank, School District of Manawa Parent Teacher Organization, and Kobussen Buses Ltd.

The program was well-received by SDM families and we hope that students and their families will continue with the healthy habits promoted by the program. After all, wellness is a continuous journey and making small changes certainly add up on our path to well-being.

## Our Students are Our Future, Go Wolves!

- New Construction
- Remodeling
- Repairs
- Septic Systems
- Well Pumps
- Water Softeners
- Water Heaters
- Full Line of Plumbing Fixtures and Supplies

**Lorge**  
PLUMBING INC.

If water comes from it or goes to it... we do it!

Pete Lorge, MP225492  
Phone: 920-596-2090  
Fax: 920-596-3774  
lorgeplb@wolfnet.net

Lorge Plumbing, Inc.  
401 Pine Street  
P.O. Box 80  
Manawa, WI 54949  
05017284

# EUROPE COMES ALIVE IN SOCIAL STUDIES

**BY TRACY BREAKER**  
SOCIAL STUDIES TEACHER

During our unit on Europe, the junior high students have engaged in various activities intending to enrich their understanding of European culture and history. These activities included having a guest speaker, talking with a French student via FaceTime, and students reenacting important European historical events.

Guest speaker, Mrs. Hélène Pohl, came to talk to the students about her home country of France. She led a discussion in class about French culture, both past and present. Mrs. Pohl also arranged for the seventh and eighth grade classes to speak with Nina, a senior at La Ciotat, a small Mediterranean town in southern France, via FaceTime.

Nina shared aspects of her day-to-day life in France, including: typical meals and foods, school classes and requirements, and what she and her friends do for fun. Nina also talked to Manawa students about her time she spent in the United States and compared the French culture to her experience of American culture. She said she enjoyed the friendliness of Americans.

To culminate our study of European history, the junior high students used what they learned in class to write skits for some of the major events and/or important people of various time periods. Working in collaborative groups, the students recreated a recognizable artifact and performed their skits of Ancient Greece, the Roman Empire, the Middle Ages, the Crusades, the Renaissance, the Reformation, and the Enlightenment.



# Open House at Paving the Way



BY DARREN CARSON  
SPECIAL EDUCATION TEACHER

Paving the Way had their open house on March 22. The event was put on by the School District of Manawa Special Education Department. Parents, teachers, and staff members welcomed several hundred members of the community to the downtown location at 407 S. Bridge Street.



Jessie Ort (Paraprofessional / Job Coach) demonstrates a PAES task during the Paving the Way Open House

The Paving the Way Lab is designed to help those students who receive Special Education services transition from school to either college or the workforce. The community members who came to the open house saw demonstrations by students and staff as well as presentations by Hunter Johnston (high school senior), Danni Brauer (Director of Special Education and Curriculum), Darren Carson (Special Education teacher), Dr. Melanie Oppor (District Administrator), and Glenn Haroldson of the Masonic Lodge #82. In addition to the presentations, food was prepared and highlighted as a future business option run by the Paving the Way team.

A wonderful time was had by all and many doors were opened for future job opportunities for students when the time is right. We would like to thank those who have already opened their doors: Keglers Bowling Alley, Goodwill Industries of Waupaca, and Little Lambs Child Care Center of Manawa along with those who are looking to become future business partners.

WBAY CHANNEL 2 SHOWCASED THE PAVING THE WAY LAB ON APRIL 12. PLEASE CHECK OUT THE LINK TO THE WBAY VIDEO ON THE DISTRICT WEBSITE.



Hunter Johnston (Senior) welcomes visitors to the Open House at Paving the Way



Jim O'Brien shows off the evaporation shed at the O'Brien Maple Grove

# Making Syrup at the O'Brien Maple Grove

BY DARREN CARSON  
SPECIAL EDUCATION TEACHER

On March 29, the students in Mrs. Warning, Ms. Wortz, Mrs. Anderson, and Mr. Carson's classrooms were invited to see, firsthand, how maple syrup is made at the O'Brien Maple Grove outside of Manawa. This grove has been in the O'Brien Family for over 140 years.

First, the students were shown how to gather the sap from the 200-300 trees that span over 10 acres. Each tree has from 1-3 catch bags which makes for a lot of bags to collect. Once the bags were collected they were dumped into 5 gallon pails. Then the pails were dumped into a 250 gallon tank for transport to the evaporating shed. When the evaporating shed was toured, the students got to see the sap being reduced from 40 gallons of sap to 1 gallon of syrup. That is a lot of sap for 1 gallon of syrup.

At the end of the tour the students got to taste the finished product served O'Brien style over vanilla ice cream. Everyone had a wonderful time and we would like to say thank you to the O'Brien family for their generosity and time. Thank you to Mrs. Warning for taking us to see one of her family's traditions.



Mike Warning and Mackenzie empty a full bag from a tree at the O'Brien Maple Grove



Anthony Bolen reattaches a catch bag at the O'Brien Maple Grove



Students learn about airplane controls



Ethan Rich, Dusten Hein, and Mr. Koehler excited to tour Sturm Foods

# Little Wolf Students on Tour

BY JANINE CONNOLLY

SCHOOL COUNSELOR LITTLE WOLF JR/SR HIGH

High school students had the opportunity to interact with patient simulators, see iron casting, explore how K cups are made, climb through planes, and visit a large greenhouse. While the juniors were taking their high-stakes ACT test and the junior high students were quietly learning in a different section of the building on Feb. 27, freshmen, sophomores, and seniors had an opportunity to check out various businesses and colleges in our area. These tours included the seniors taking advantage of learning about local job and internship opportunities at Sturm Foods and Waupaca Foundry, and participating in a Waupaca County Job Fair. Senior Human Biology students had the opportunity to visit the “Cadaver Lab” at Fox Valley Technical College and also tour the forensic science area of Fox Valley Technical College’s Public Safety Training Center.

Freshmen and sophomores had the option to explore different sites and programs at Fox Valley Technical College in the morning and then experienced a fun-filled game of Kahoot and a campus tour of University of Wisconsin-Oshkosh. Some students toured the Spanbauer Center in Oshkosh and learned about the aviation program and the welding and building trades programs. A highlight of this tour included use of the flight simulator and climbing into several of the planes on site. Students were also surprised to learn that the residential building program builds a home each year! Other students spent the morning at Fox Valley Tech’s Public Safety Training Center and learned that the FBI trains at this site. Students also enjoyed seeing the plane, house, and mini city used to train fighters and police officers.

Another group of students spent the morning at the main campus of Fox Valley Technical College learning about the medical careers, engineering programs, agriculture, and culinary arts programs. Students were excited to see the patient

simulators that could be programmed to sweat and give birth, and all of the up-to-date technology used in agriculture and engineering training. Many students were pleasantly surprised to learn of the affordability of both the UW and Technical College systems. Special thanks to Sturm Foods, Waupaca Foundry, Fox Valley Technical College, and University of Wisconsin-Oshkosh for giving Little Wolf students a chance to explore their post-high school options. This is an effective and exciting way for students to develop their Academic and Career Plans. One student exclaimed, “I’m glad I went! I am pretty set on attending the FVTC Ag Program!” Ben Wickersheim, Little Wolf’s admissions representative from Fox Valley Technical College reported that the students from Manawa were a pleasure to have on campus due to their interest in learning and outstanding behavior.



Dawson Werth learns how to make precision cuts at Fox Valley Tech



Jackson Jaeger, Alex Wepner, Danny Beyer, and James Seeger tour the greenhouse



Makenna Jaeger, Sydney Lee, and Alyssa Hedtke watch virtual dissection



Manawa seniors enjoy Waupaca Foundry tour

# Celebration of Reading

BY JACQUELYN GAST  
DISTRICT READING  
SPECIALIST



When we celebrate Read Across America Week at Manawa Elementary School, we celebrate in a big way. Thanks to the combined efforts of Sturm Memorial Library and the MES, this year our week was highlighted by a presentation from children’s book author, Miranda Paul. Each grade level had a chance to attend her presentation which was specifically geared for their age and interest level. She shared some insight on how to be a great author as well as interactively shared some of her stories with the students. The entire week at MES was filled with book giveaways as well as themed dress-up days. The dress-up days were chosen based on some of Miranda Paul’s books. For example, one of Paul’s books, *Whose Hands Are These?* talks about different occupations. Our students were encouraged to dress for their future career that day. The end of the week included a DEAR (Drop Everything and Read) time for the entire building. Even though we try to promote the love of reading every day at MES, Read Across America Week was most certainly a fantastic celebration. We look forward to what next year has in store for us.



Author, Miranda Paul gets help from a few MES students in playing out one of her children’s books.



Miranda Paul has our young students totally engaged in her presentation.



5th grade students in Mrs. Highlander’s class dress for their future career during Read Across America Week

# Receiving Outstanding Customer Service

BY JESSIE ORT AND DARREN CARSON

Good customer service is not always an easy thing to find, let alone outstanding customer service from someone who goes above and beyond. The Manawa Little Wolf High School Special Education Department had the good fortune of experiencing just that Tuesday, Feb. 27, at Milwaukee Burger Company. We had a larger group of eight to serve and had not called ahead, yet were seated immediately. There are many trials to a waiter/waitress job especially with a large group. Our group added a large variety of personality, energy, and needs that could easily overwhelm or shut down any service provider. However, our waiter, Trevor James, gave us just that.



kneeled at eye level with others, was flexible with tons of odd requests while the whole time maintaining a caring, understanding, patient demeanor. He never once made any of us feel like he was in a hurry or had to try to be understanding; he just was. And if all of that wasn't enough, he also approached staff with a written note asking if the table could have dessert. It was very considerate not to ask out loud in front of the students so they weren't upset. We thanked him and let him know we were on a budget for the outing so it wasn't an option for the day. He then informed us that it would be on the house if the kids would like to have it, which they did.

Trevor warmly smiled and showed a student who noticed his tattoos, talking about every single one he had. He then introduced himself to the table and began taking orders. Trevor spoke with each student treating him or her with respect and

as equals which they very much are. Too often, unfortunately, students with special needs are not viewed as equals in public settings. He took extra time to allow students to make decisions,

His amazing character and ability throughout the experience to anticipate our needs made this one of the best outings we have ever taken with our students. So, to Milwaukee Burger Company, thank you for wonderful food and great hiring of staff. To Trevor James, thank you for being a genuinely kind, patient, and good-hearted human being.

**April 24th from 6:00-7:30**  
**Manawa Jr./Sr. High School Commons**

## A Real Conversation Between Kids and Adults

Join us for a facilitated conversation. You and your son/daughter will be given scenarios on current risks facing your child.

These conversations will provide both the child and the parent insight into:

- What your kids know about alcohol, nicotine, and drugs.
- How parents will react if the child makes a bad choice.
- Strategies for kids if they face peer pressure.

6.5% of 8th graders use marijuana daily

Caffeine is the most used psychoactive drug in the United States

Drug overdoses cause more deaths than traffic accidents

# Raising Awareness

BY MELANIE OPPOR  
 DISTRICT ADMINISTRATOR

Mr. Ted Neitzke, CESA #6 Director and Captain Tim Dehring, West Bend Police Department, provided an "adults only" drug and alcohol awareness program for parents of children in grades five to twelve on April 5. This was an eye-opening experience about the very real risks that today's youth face and how parents can support their children through



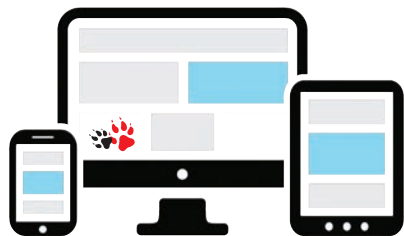
potentially life changing decisions. Please mark your calendar for April 24 when Mr. Neitzke and Captain Dehring will return to the SDM to facilitate parent/child conversations using realistic situations. How do you raise the issue of drug use, alcohol use, and peer pressure? You won't want to miss this opportunity to start those difficult but necessary conversations with your children.



## Youth Suicide Prevention Resources Are Available

To get updated information on suicide prevention, intervention and post-vention resources, visit the

**SDM website > Parents > Suicide Prevention**



## New Web-site

The School District of Manawa launched its new district website on April 6. Please take a moment to check out all the exciting photos and new style at: <http://www.manawaschools.org/>

This is the culmination of a nearly yearlong project to provide more information to the public in a user-friendly format.

## March Board Recognition



Briley Rosin, 5th Grade and Kennedy Rosin, 8th Grade - Received a 1st on Solo / Ensemble Class C Trumpet Performance



**Snow Day / Inclement Weather information can be found at:**

**RADIO STATIONS:** WDUX 92.7 FM, WDUX 800 AM, WROE 94.3 FM

**TV STATIONS:** Channel 2, 5, 7, 11 & 26

**APRIL / MAY SCHOOL EVENTS:**

- Apr 20 State Forensics
- Apr 22-23 State Student Council Conference
- Apr 23 BOE Monthly Mtg 7:00 p.m.
- Apr 24-27 Wis. Forward Exam
- Apr 24 ACT Aspire Testing
- Apr 24 Ted Neitzke, CESA 6 Drug Prevention Presentation
- Apr 29 National Honor Society Induction 7:00 p.m. LWHS
- Apr 30-May 1 ACT Aspire Testing
- May 2 – Ad Hoc Recognition Comm Mtg 5:00 p.m. MES Brd Rm
- May 3 ACT Aspire Testing
- May 3 MES Scholastic Bogo Book Fair 3-8:00 p.m. MES Library
- May 4 MES Scholastic Bogo Book Fair 3-6:00 p.m. MES Library
- May 4 Food For America – Ferg/Williams/Amador Farms
- May 5 State Solo Ensemble Competition
- May 6 Spring Band Concert & Gr. 7-12 Art Show 2-4:00 p.m. LWHS
- May 6 Senior Banquet 6:30 p.m. HS Commons
- May 8 Spring Choir Concerts & Gr. 7-12 Art Show 7:00 p.m. LWHS
- May 9 NHS Blood Drive 8-3:00 p.m. LWHS
- May 18 Color Run

**All Athletic Events are on the Calendar of Events page on the district website:**  
[www.manawaschools.org](http://www.manawaschools.org)

## School District of Manawa Information

### District Office

Phone: 920-596-2525  
800 Beech Street  
District Administrator: Dr. Melanie J. Oppor  
Business Manager: Carmen O'Brien  
Curriculum & Special Ed. Director: Danielle Brauer  
Technology Director: Bryant Cobarrubias

### Little Wolf Jr./Sr. High School

Grades 7-12  
Phone: 920-596-2524  
515 E. 4th Street  
Principal: Daniel Wolfgram



### Manawa Elementary School

Grades PK – 6  
Phone: 920-596-2238  
Principal: Michelle Pukita

### Manawa Board of Education

President: .....Joanne Johnson  
Vice President .....Russ Johnson  
Clerk .....Bobbi Jo Pethke  
Treasurer.....Hélène Pohl  
Director.....Russell Hollman  
Director.....Stan Forbes  
Director.....Bruce Scheller

### Board Meetings:

Regular Board Meetings are held on the third Monday of each month (except April – 4th Monday) in the Board Room located at the Manawa Elementary School at 7:00 pm. Any additional meetings are duly posted on the district's website, in the City Hall and at Sturm Public Library. For additional information please contact the District Office at 920-596-2525.

The School District of Manawa does not discriminate against individuals on the basis of sex, race, religion, national origin, ancestry, creed, pregnancy, marital or parental status, sexual orientation, or physical, mental, emotional, or learning disability. Federal law prohibits discrimination in education and employment on the basis of age, race, color, national origin, sex, religion, or disability.

### Mission Statement:

The School District of Manawa is the place where students choose to excel academically and realize their strengths.

### Vision Statement:

The School District of Manawa engages students to reach their full potential in a changing global society through highly effective instruction and leadership.

## WAYS YOU CAN HELP MANAWA SCHOOLS

Boxtops Needed – Clip the Boxtops for Education logo on many household products and drop-off at any school office. Some of the many products with the logo are: Betty Crocker, Pillsbury, General Mills, Ziploc, Hefty, Kleenex and Huggies.

## WEBSITE ACCESSIBILITY

The School District of Manawa strives to be inclusive and responsive to the needs of all district residents. Anyone finding district information or website functionality to be inaccessible to persons with disabilities is asked to contact the District Webmaster, Mr. Cobarrubias, by telephoning 920-596-5737 or emailing him at [bcobarrubias@manawaschools.org](mailto:bcobarrubias@manawaschools.org)

The following links provide direct access to the School District of Manawa Policies related to Section 504 and Title II along with the names and contact information for the District's 504/ADA Compliance Officers and can be accessed from the district website under Board of Education > Board Policies > Link to Policies:

- 2260.01 - SECTION 504/ADA PROHIBITION AGAINST DISCRIMINATION BASED ON DISABILITY
- 1623 - SECTION 504/ADA PROHIBITION AGAINST DISABILITY DISCRIMINATION IN EMPLOYMENT
- 3123 - SECTION 504/ADA PROHIBITION AGAINST DISABILITY DISCRIMINATION IN EMPLOYMENT
- 4123 - SECTION 504/ADA PROHIBITION AGAINST DISABILITY DISCRIMINATION IN EMPLOYMENT
- 2260 - NONDISCRIMINATION AND ACCESS TO EQUAL EDUCATIONAL OPPORTUNITY
- 1422 - NONDISCRIMINATION AND EQUAL EMPLOYMENT OPPORTUNITY
- 3122 - NONDISCRIMINATION AND EQUAL EMPLOYMENT OPPORTUNITY
- 4122 - NONDISCRIMINATION AND EQUAL EMPLOYMENT OPPORTUNITY

The School District of Manawa's Section 504 and ADA Compliance Officers are as follows:

### Carmen O'Brien

Business Manager  
School District of Manawa  
800 Beech Street  
Manawa, WI 54949  
920-596-5332  
[cobrien@manawaschools.org](mailto:cobrien@manawaschools.org)

### Daniel Wolfgram

High School/Junior High School Principal  
School District of Manawa  
515 E. Fourth Street  
Manawa, WI 54949  
920-596-5310  
[dwolfgram@manawaschools.org](mailto:dwolfgram@manawaschools.org)



The Board of Education and Administrative Team would like to thank all the individuals, groups, and businesses that so generously contribute to the District. Your gifts of money, time, materials, and talents support and enhance programs for all our students and staff!



The SCHOOL DISTRICT OF MANAWA is the place where STUDENTS choose to EXCEL academically and realize their STRENGTHS.



## STEP VOLUNTEERS:

Senior citizens can save on their property taxes by volunteering in the schools through the Senior Tax Exchange Program. Contact Ruth Lord, Director at 920-596-5673 for more information.